

SEZIONI E PIANTA COPERTURA
EDIFICI Sub B

Tavola 20 di 20/e

settembre 2019

Geom. Francesco Bandecca

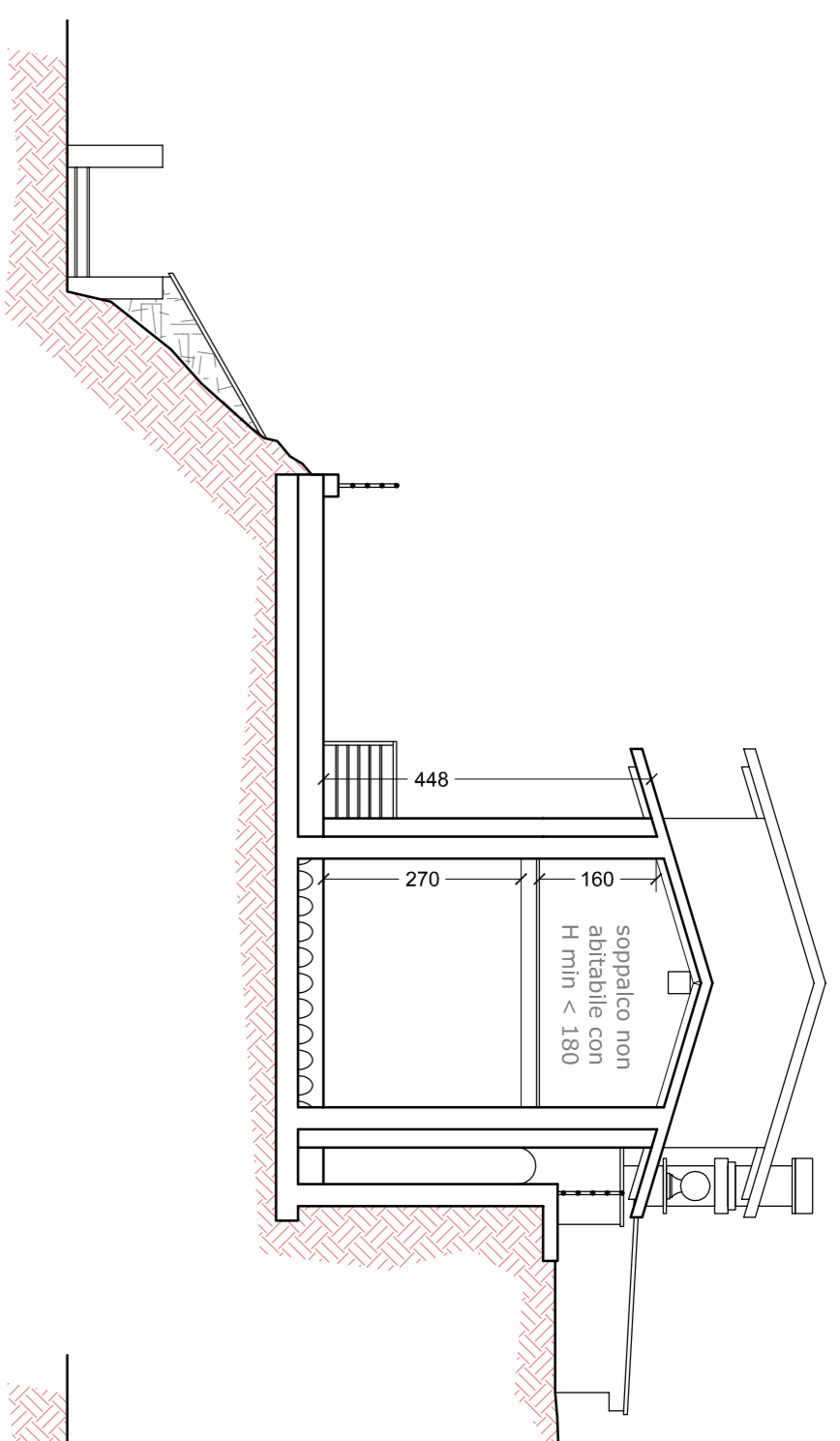
Arch. Nicola Pinelli

i Proprietari

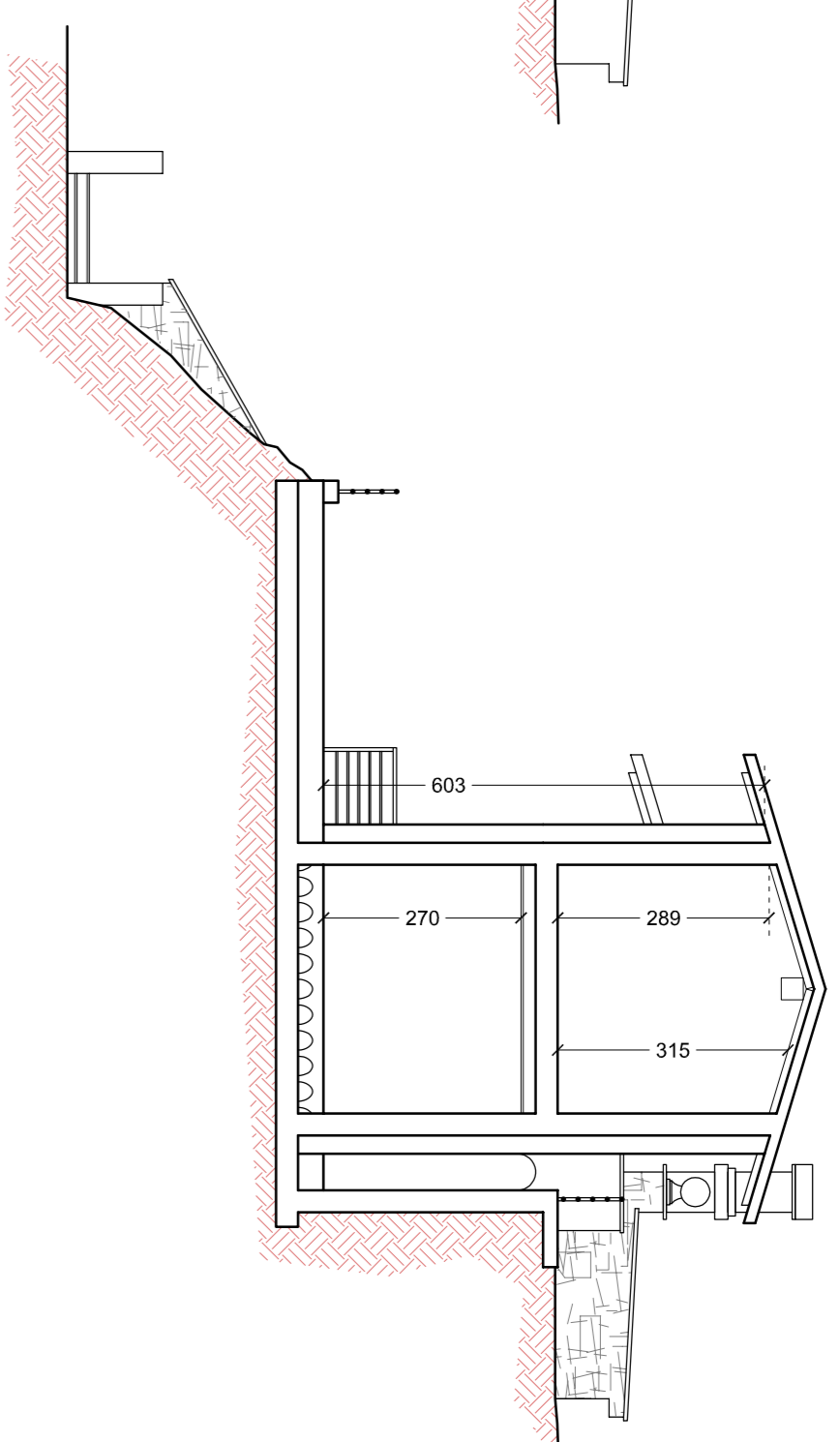


Studio Tecnico Bandecca - piazza Vittorio Emanuele II n.38 - 50031 Bientina (PI) - tel e fax 0587 755589

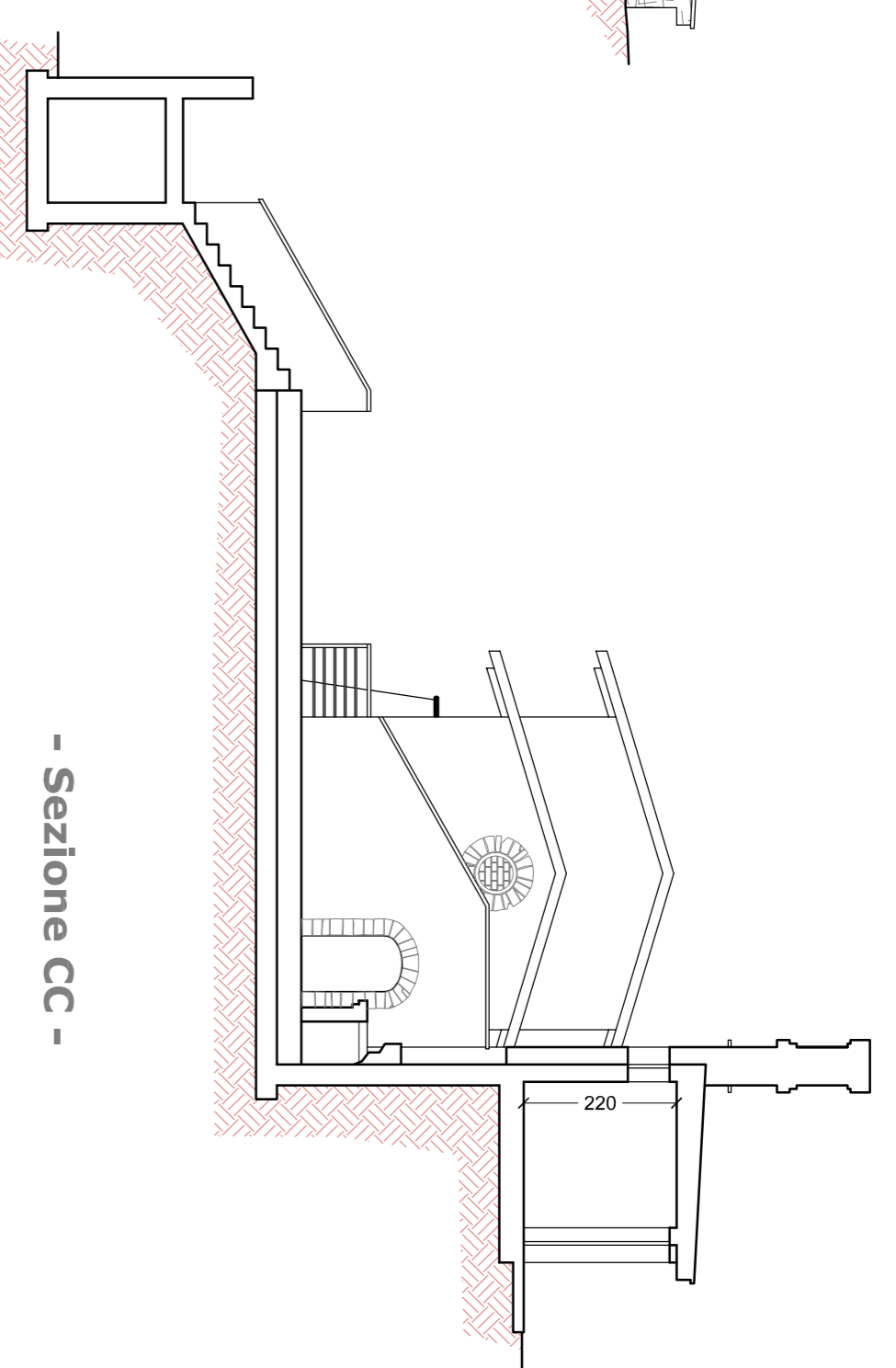
Realizzazione nuovo edificio - "Edificio 14"



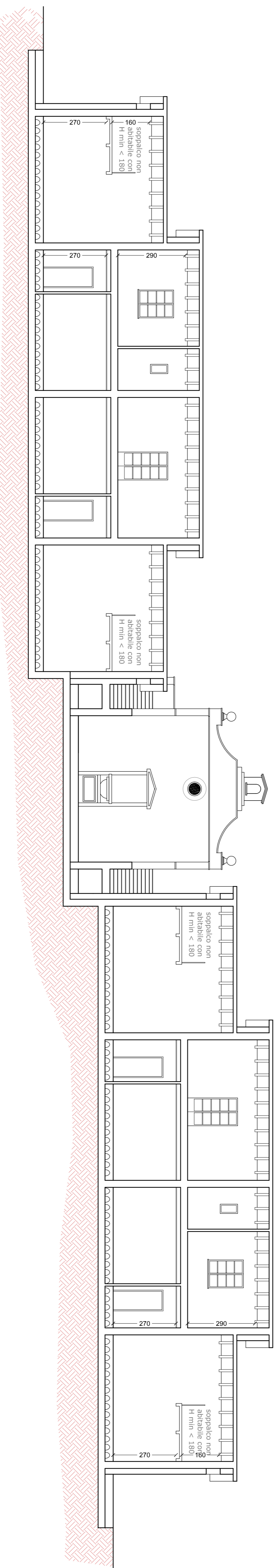
- Sezione AA -



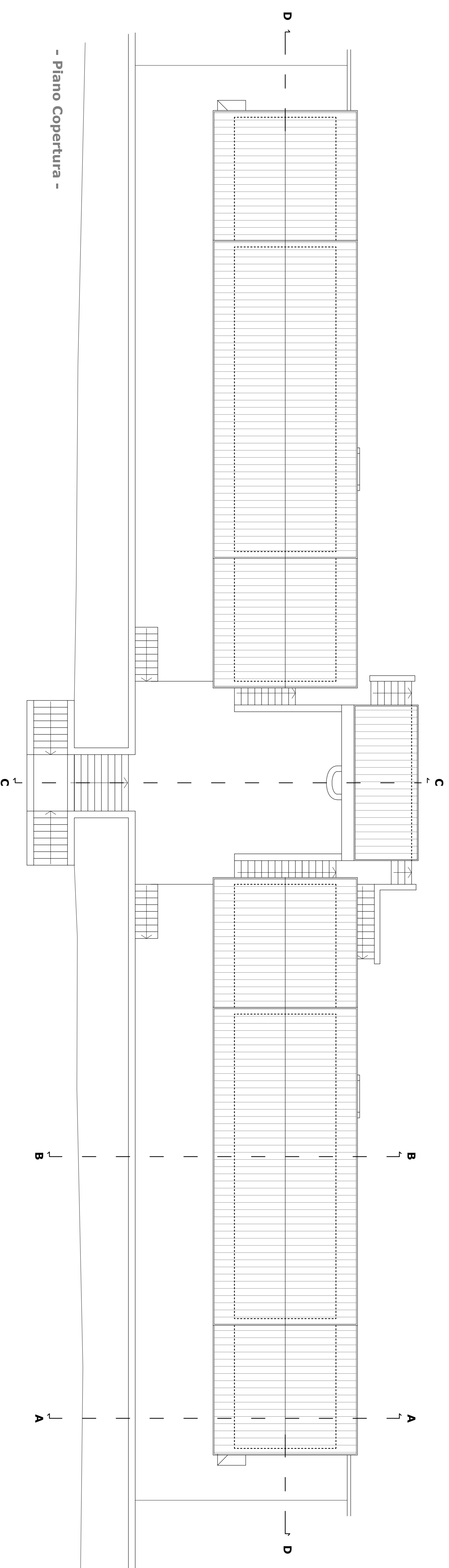
- Sezione BB -



- Sezione CC -



- Sezione DD -



- Piano Copertura -